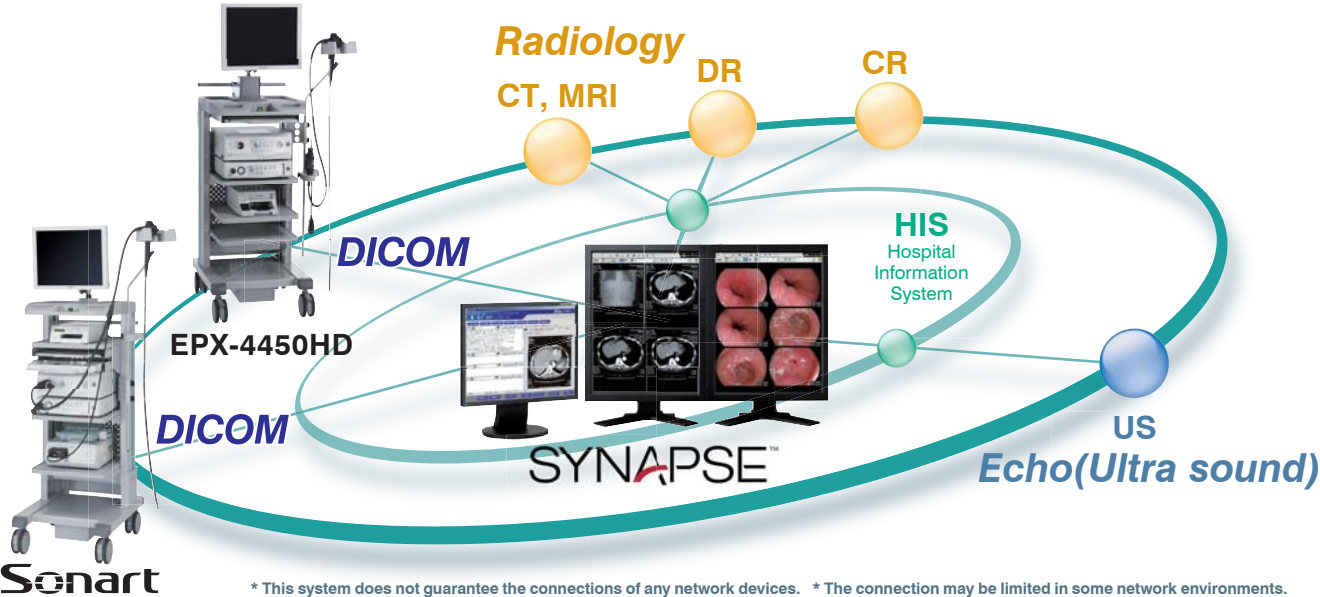


EPX-4450HD integrates into the hospital network environment with DICOM interfaces



Specifications

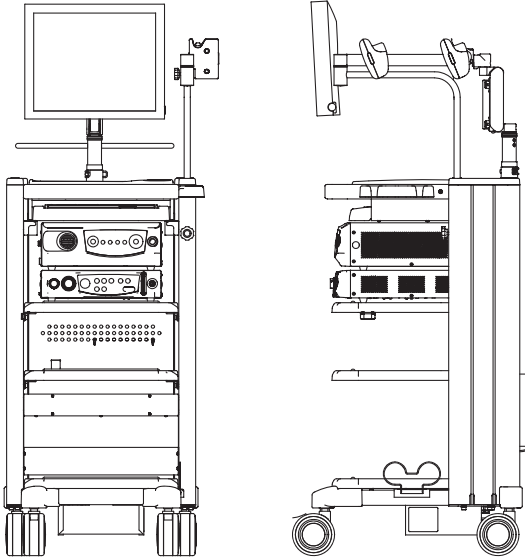
VP-4450HD Specification	
Digital Output	HD-SDI : HDTV 1080i (2ch) DVI (Digital Visual Interface) : 1280 × 1024p Ethernet : 100 / 10Base
Analog Output	RGB : 1280 × 1024p SDTV(120V / NTSC, 230V / PAL) : RGB, Y / C, Composite
Color Adjustment	Brightness, Red, Green, Blue, R-Hue, Chroma; 9steps
Detail	Hi, Lo; 9steps
Contrast	3steps
Hyper-Sharpness	Hi, Mid, Lo, Off
Color Emphasis	Hi, Mid, Lo, Off
FICE	Flexible spectral Imaging Color Enhancement 10 presets
Iris	Average / Peak / Auto
Image storage	CF Card
Power Rating	120V 60Hz 0.8A      230V 50Hz 0.5A
Dimensions ( W×H×D )	390 × 105 × 460mm
Weight	9.5kg
DICOM	MWL, Store

Generic Name : Processing unit

XL-4450 Specification	
Lamp rated value	Main Lamp : 300W Xenon lamp LMP-002 Emergency Lamp : 75W Halogen Lamp
Light Control	Automatic light control
Lamp Cooling method	Forced air cooling
Air supply pump	High, Mid, Lo, Off
Light Save	On, Off
Transmitted illumination	On, Off
Power Rating	120V 60Hz 3.3A      230V 50Hz 1.7A
Dimensions ( W×H×D )	390 × 155 × 450mm
Weight	15kg

Generic Name : Endoscopic light source

Sample configuration



XL-4450

VP-4450HD

FUJIFILM

ELECTRONIC VIDEO ENDOSCOPY SYSTEM  
EPX-4450HD



FUJIFILM

FUJIFILM Corporation

26-30, NISHIAZABU 2-CHOME, MINATO-KU, TOKYO 106-8620, JAPAN  
<http://www.fujifilm.com/products/medical/endoscopy/contact/>



# FUJIFILM’s State-Of-The-Art Technology for Endoscopy System: EPX-4450HD Video Processor

Clear and sharp image quality, advanced image processing features and interface allow for user -friendly operations and efficient workflows. The flagship EPX-4450HD processor, from FUJIFILM’s line-up of endoscopy systems, provides an optimal environment for clinical examinations.



## FICE equipped, this processor can optimize endoscopic examinations

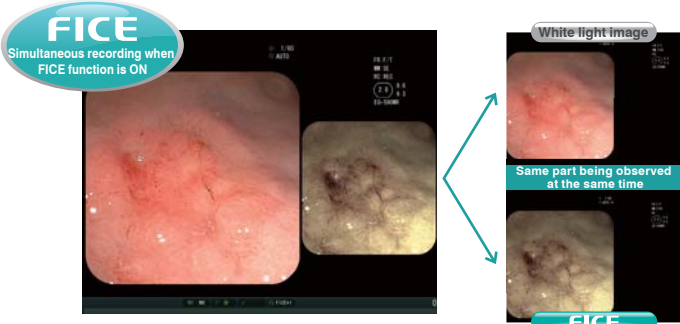
Flexible spectral Imaging Color Enhancement (FICE) uses high-resolution color distinction technology, the same technology used to analyze satellite images, aid in the diagnosis of endoscopic examinations. The selection from up to ten preset patterns allows a comprehensive diagnosis for different endoscopic domains. Additional emerging display modes makes FICE an essential tool in daily endoscopy.



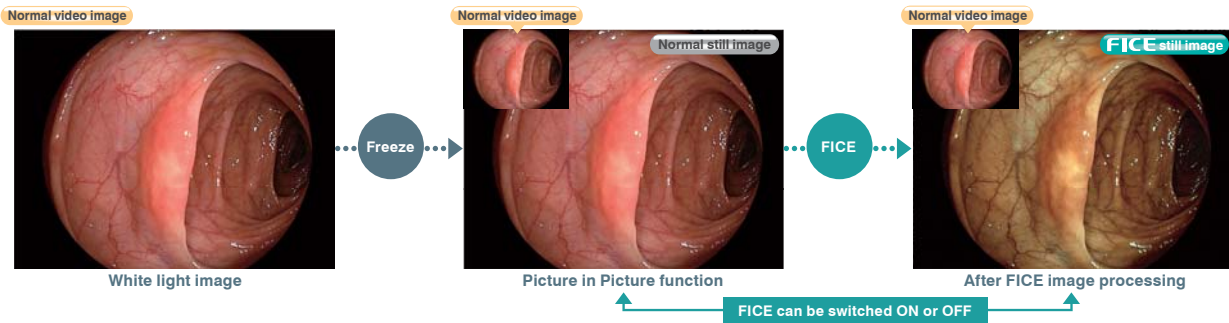
**Dual Mode**  
Simultaneously display a FICE image and white light image on the same monitor.  
By having a dual view of a FICE image and white light image on the same monitor, you can collect more information for examination and diagnosis.



**Simultaneously record a FICE image and white light image while FICE is activated.**  
While FICE is activated, the EPX-4450HD can automatically record both the FICE image and white light image on a CF card simultaneously.



**Picture in Picture (P in P), in which two views are shown on the same monitor, and FICE ON/OFF control are available for the same still image.**  
Freeze image and real-time video are automatically displayed in the small view so you can conduct examinations safely without losing sight while in the G.I. tract. FICE can also be easily switched on a frozen image allowing you to conduct even more efficient and precise diagnostic imaging during the examination.

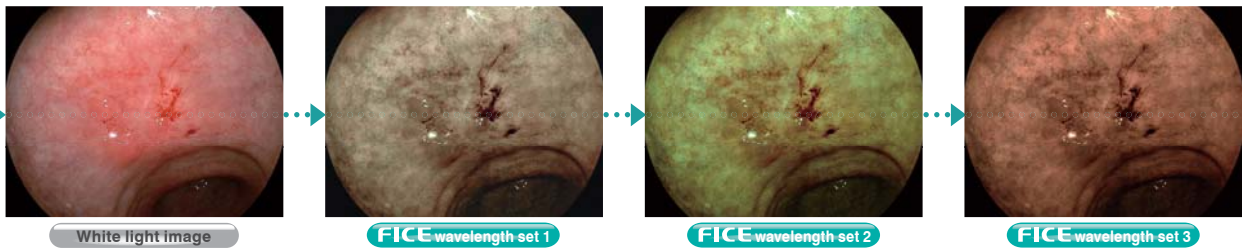


## Change the FICE preset pattern with the endoscope switch in real-time.

Use the endoscope button to select up to three wavelength patterns from presets. You can switch quickly, moving to the next FICE image with a single push which allows to select the best pattern for the respective diagnosis.



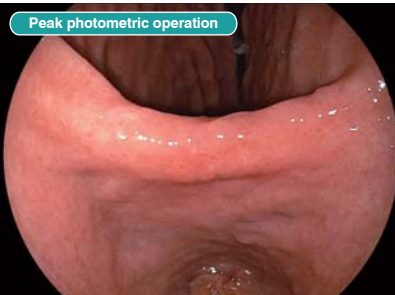
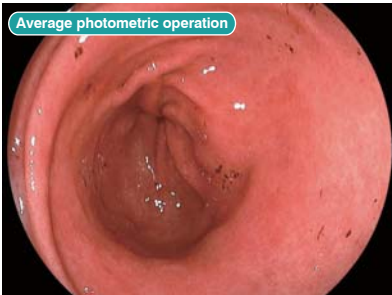
Instant switching (switch patterns in rotation)



## Giving you clear images with advanced imaging technology

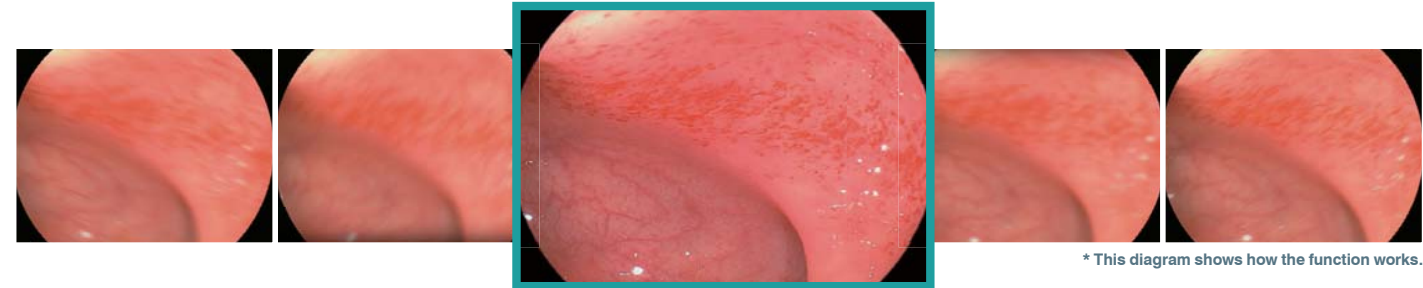
### Achieving always optimal illuminated images with automatic control of the photometric mode.

The automatic photometric mode selection optimally adjusts the lighting in accordance with the positioning of the endoscope, providing you with a well-balanced picture from close-up to distant focusing.  
\* Available with the 500 series scopes.



### Anti-blur function : extracting the best still image from multiple images.

The anti-blur function offers sharpest and clearest images for review and documentation in any occasion.



A sequence of images always kept in the background → Freezing the image during the examination → Automatic selection and display of the sharpest image.

## Interface with excellent usability and safety

### The operation screen is easy to use and support the hospital workflows.

Before the examination, view the patient’s information on screen for verification.  
\* You can also see the scope’s serial number and the direction of the forceps on the screen.  
\* Cannot be displayed on some scopes.



### The new screen layout on the monitor improves examination efficiency.

Patient, study and imaging information are shown at the bottom of the monitor. This user friendly layout supports an efficient endoscopy examinations.

