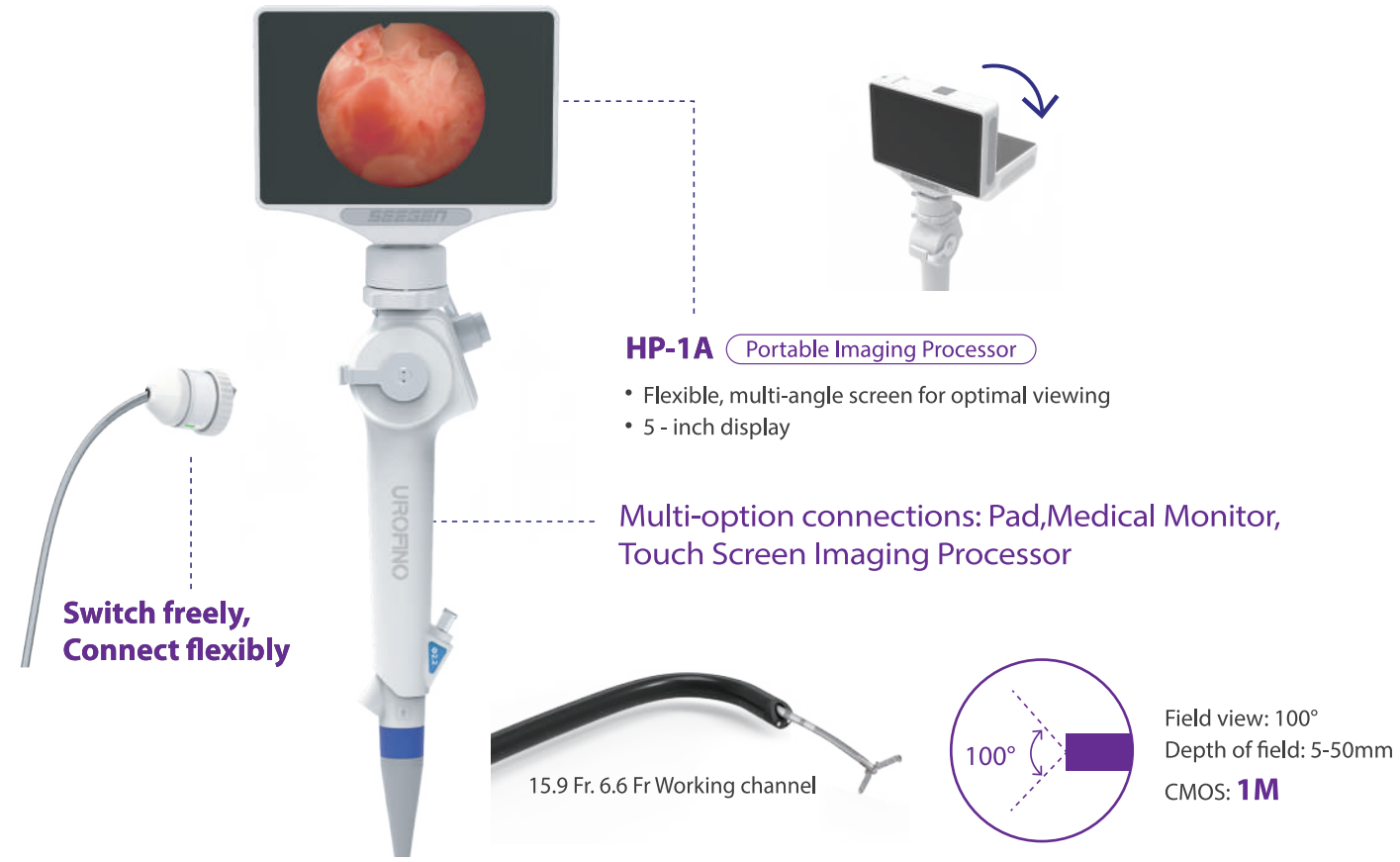


Cystoscope

An Integrated Flexible Solution for Bladder Examination, Lithotripsy, and Stents Removal Management



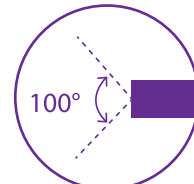
HP-1A Portable Imaging Processor

- Flexible, multi-angle screen for optimal viewing
- 5 - inch display

Multi-option connections: Pad, Medical Monitor, Touch Screen Imaging Processor

Switch freely, Connect flexibly

15.9 Fr. 6.6 Fr Working channel



Field view: 100°
Depth of field: 5-50mm
CMOS: 1M

Imaging Processor



	PL-1000	PL-2100
Power	Voltage 100-240 V Frequency 50/60 Hz Rated input 45VA	Voltage 100-240 V Frequency 50/60 Hz Rated input 48 VA
illumination	Lamp 2W LED Lamp life 30,000 hrs Color temperature 3,000K-7,000K	Lamp 2W LED Lamp life 30,000 hrs Color temperature 3,000K-7,000K
Dimensions(W*D*H)	350mm*130mm*425mm,8kg	270mm*72mm*260mm,3kg
Functions	White balance,Sharpness,Freeze	White balance,Sharpness,Freeze
Output	DVI*1,S-Video*1, CVBS*1	HDMI*2
Storage	USB 2.0	USB 2.0
Screen	/	10.1 inch

Accessories

Biopsy Forceps

REF	Shape	Specification
FTL-BF-10-120-O-C-R	Oval	O.D.:1.0mm,120cm
BF-10-120-A1-O	Oval	O.D.:1.0mm,120cm
BF-10-120-B1-O	Alligator	O.D.:1.0mm,120cm
BF-15-120-A1-O	Oval	O.D.:1.5mm,120cm
BF-18-120-A1-P	Oval	O.D.:1.8mm,120cm

Extraction Basket

REF	Basket Shape	Specification
UB-16F-120-T11	3 wires	O.D.: 0.53mm,120cm
UB-18F-120-T11	3 wires	O.D.: 0.60mm,120cm
UB-21F-120-T11	3 wires	O.D.: 0.70mm,120cm
UB-18F-120-F11	4 wires	O.D.: 0.60mm,120cm
UB-20F-120-F12	4 wires	O.D.: 0.66mm,120cm

Grasping Forceps(Alligator)

REF	Shape	Specification
FTL-GF-18-120-RA	Alligator Rat tooth	O.D.:1.8mm,120cm

Disposable Ureteral Access Sheath

REF	ID	Working Length
Single Channel with negative pressure	8.5Fr-14Fr	17cm-55cm
Dual Channel with negative pressure	8Fr,9Fr,10Fr	17cm-55cm

tech Irrigation Tube

REF	Description
TH-URA-350-1-00	with 1-spike connection system,length:437cm
TH-URB-320-2-30	with 2-spike connection systems,length:437cm

Endoscopic Flushing Pump

Model	EFP-1
Operation Mode 1	Intermittent (30s ON / OFF)
Operation Mode 2	Continuous
Speed Levels	15 Levels
Max. Flow Rate	1000 ml/min(@ 6.8mm ID Tube)
Optional Accessories	Flush Tube, Bottle, Bottle Holder

Monitor Bracket

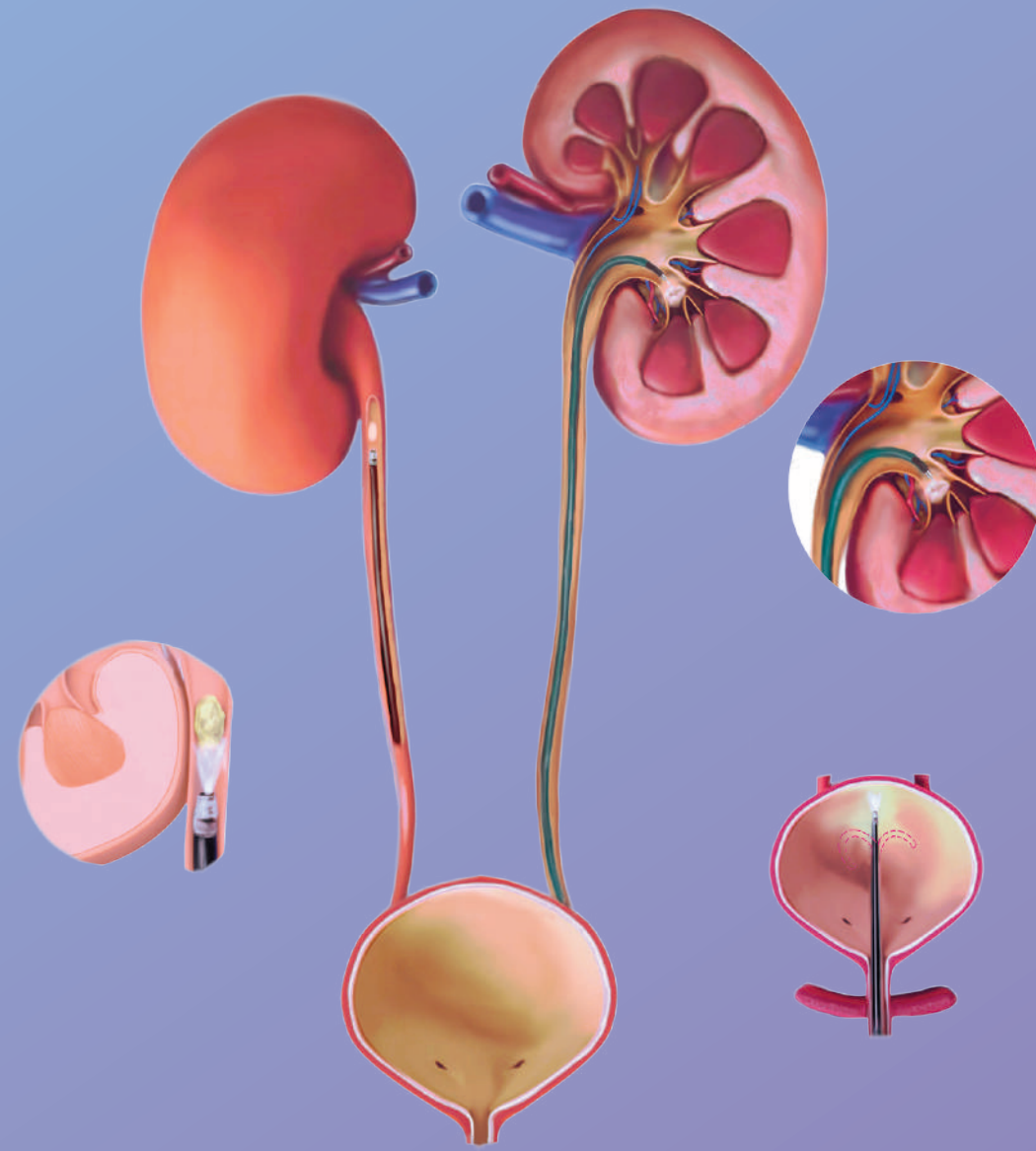
REF	Net weight	W*H*D	Suitable size	Load capacity
APH20C	0.5kg	115X115X235mm	< 27"	2-8kg

Trolley

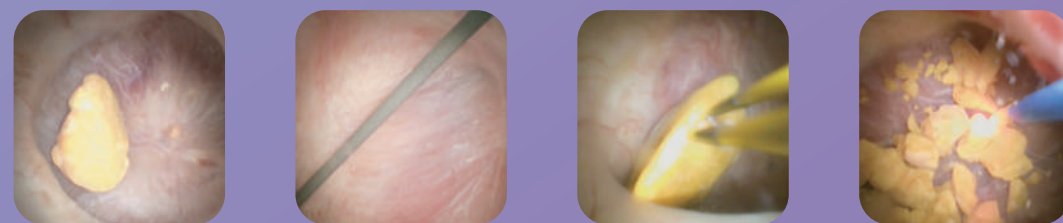
BRT355
Cart lifting height: 80, 105 cm
Usable tabletop area: 400*400 mm
Load capacity: ≥6kg

Trolley

BRT-110
Base dimensions: 55*55 cm
Lifting height: 90-120 cm
Load capacity: ≥5kg



Total Solution For Urolithiasis Visualization



Ureteroscope

A One-Stop Urological Exploration and Precise Lithotripsy Solution
—Efficient, Precise and Safe

PRIAS™ - Pressure Regulating Irrigation Aspiration System
Redefine Surgical Efficiency

In-scope Suction

Remote Buttons

Deflection Locker

Passive Bending
Better lower pole accessibility

±90° Insertion Tube Rotation
Minimization of surgeon fatigue

Independent Irrigation Channel
Enhances Irrigation Efficiency

Dual Working Channel

- Clear visualization
- Simultaneous operation
- Intrarenal pressure reduction

Endoscopic Flushing Pump

Continuous Irrigation Mode
Low-flow continuous irrigation for high efficiency and safety

5.4Fr/2.4Fr	6.6Fr/3.0Fr	7.5Fr/3.6Fr	9.0Fr/3.6Fr	9.9Fr/3.6Fr+1.8Fr