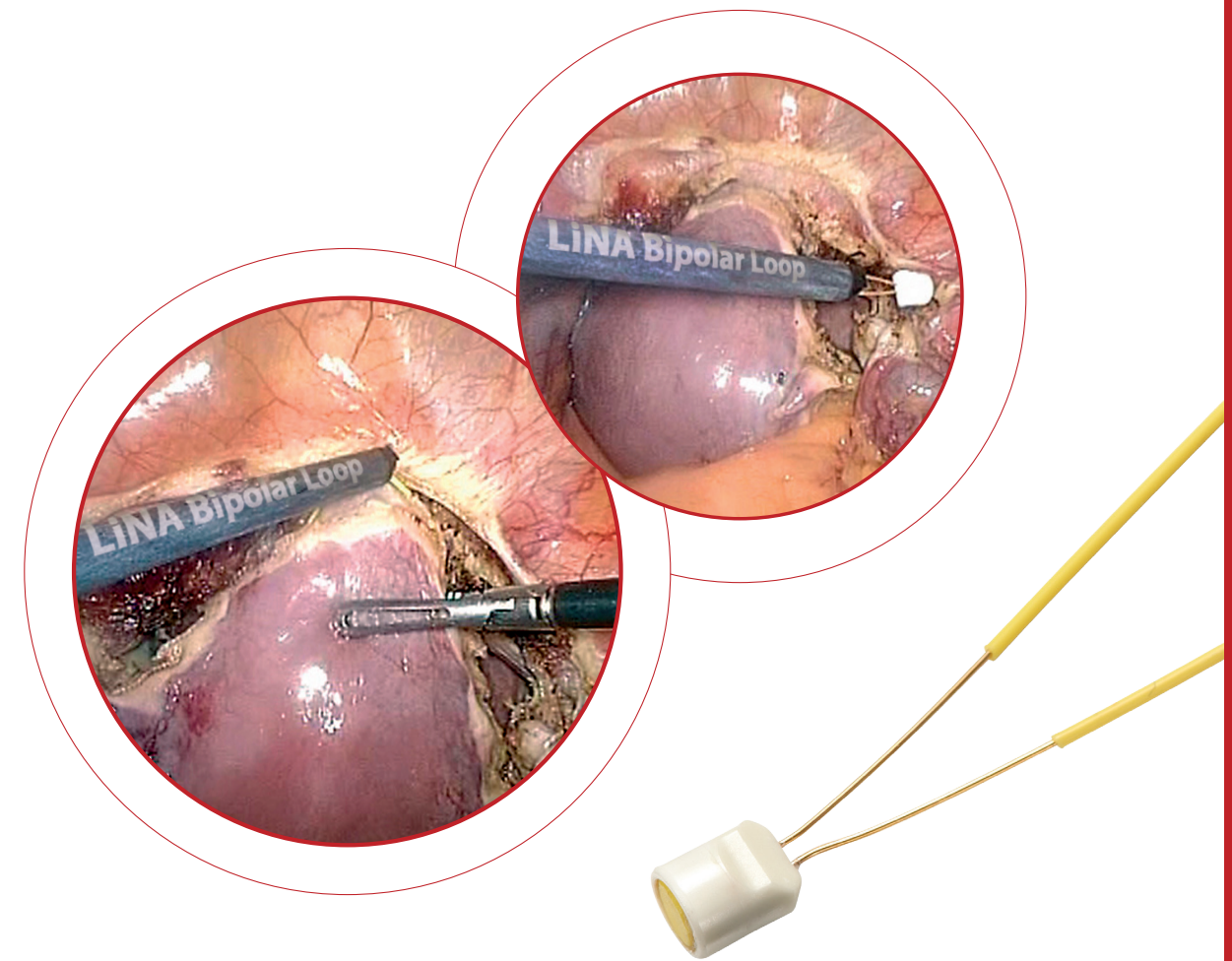
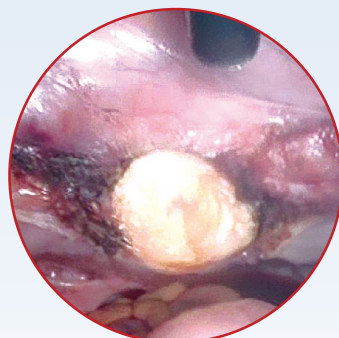
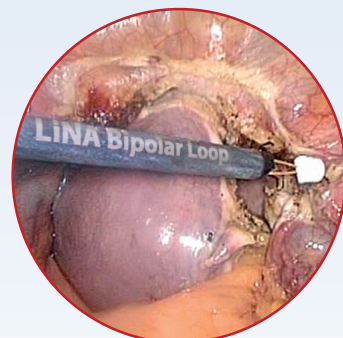
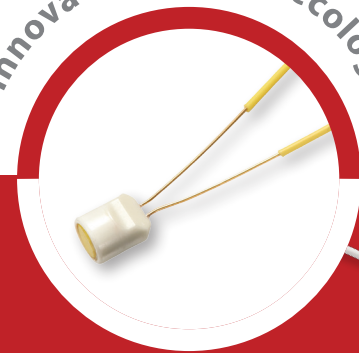
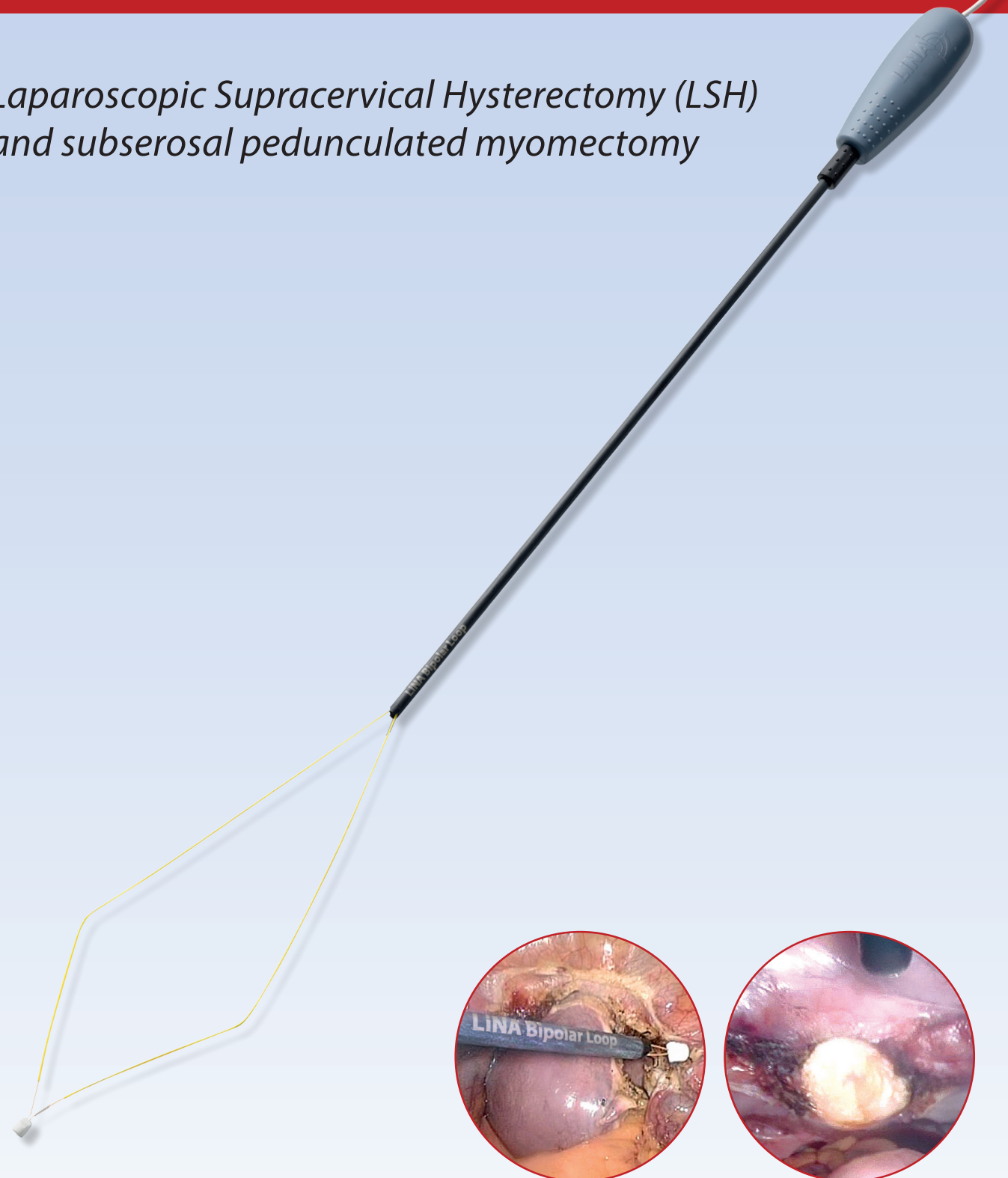


Innovation in Gynaecology

# LiNA Bipolar Loop™

Laparoscopic Supracervical Hysterectomy (LSH)  
and subserosal pedunculated myomectomy



Ordering information:

LiNA Bipolar Loop™ **CE**  
0459

REF.	Product	Packing
BL-160	LiNA Bipolar Loop – 5mm Bipolar Endoscopic Loop for LSH & Myomectomy. Dimensions of loop: 160mm x 80mm. With 3m cable and fixed 2-pin 4mm male bipolar plug.	Box of 6, sterile, single use
BL-200	LiNA Bipolar Loop – 5mm Bipolar Endoscopic Loop for LSH & Myomectomy. Dimensions of loop: 200mm x 100mm. With 3m cable and fixed 2-pin 4mm male bipolar plug.	Box of 6, sterile, single use
BL-240	LiNA Bipolar Loop – 5mm Bipolar Endoscopic Loop for LSH & Myomectomy. Dimension of loop: 240mm x 120mm. With 3m cable and fixed 2-pin 4mm male bipolar plug.	Box of 6, sterile, single use
BL-160-E	LiNA Bipolar Loop – 5mm Bipolar Endoscopic Loop for LSH & Myomectomy. Dimensions of loop: 160mm x 80mm. With 3m cable and EURO connector.	Box of 6, sterile, single use
BL-200-E	LiNA Bipolar Loop – 5mm Bipolar Endoscopic Loop for LSH & Myomectomy. Dimensions of loop: 200mm x 100mm. With 3m cable and EURO connector.	Box of 6, sterile, single use
BL-240-E	LiNA Bipolar Loop – 5mm Bipolar Endoscopic Loop for LSH & Myomectomy. Dimensions of loop: 240mm x 120mm. With 3m cable and EURO connector.	Box of 6, sterile, single use



LiNA Medical ApS

• Formervangen 5  
DK-2600 Glostrup  
Denmark

• Tel.: +45 43 29 66 66  
Fax: +45 43 29 66 99  
info@lina-medical.com

• www.lina-medical.com  
CVR: 10054974

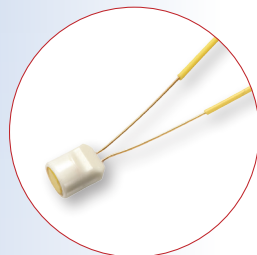


# LiNA Bipolar Loop™

The LiNA Bipolar Loop facilitates the same outstanding features as the LiNA Gold Loop, which reformed the market for Laparoscopic Supracervical Hysterectomy (LSH). This next generation loop uses bipolar energy to section the uterus in few seconds – reducing both procedure time and number of traditional cutting and coagulation instruments.

The LiNA Bipolar Loop is additionally designed to simplify subserosal pedunculated myomectomy, resecting the myoma in one clean cut.

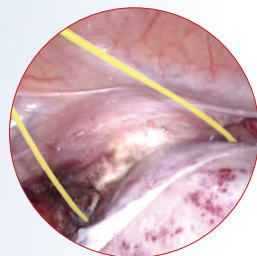
## safe



### Low energy high effect

The LiNA Bipolar Loop underlines the importance of safety during every procedure.

- **Optimum efficiency**  
The bipolar energy enables an instant cut with optimum efficiency at a low effect, using only 55-70 watts.  
The fact that no neutral plate is needed improves the safety of the patient.
- **Protective ceramic tip**  
A protective ceramic tip substantiates the safety by contracting the cutting area to only including the sides of the loop.  
In addition the ceramic tip ensures correct retraction of the loop.
- **Improved visualization**  
The coloured insulation of the electrode provides a comprehensive view for positioning and improving the visualization on the monitor.  
The ceramic tip amplifies the correct placement of the loop around the cervix due to easy identification of the electrodes.



## functional

### One clean cut in few seconds!

The functional design strengthens the intuitive and easy-to-use ability of the LiNA Bipolar Loop.

- **Ready and easy to operate**  
When the handle is pushed forward the cutting loop opens instantly and is ready for immediate positioning around the uterus or myoma.  
Placement of hands is indicated by a rugged surface on both handle and tube thereby ensuring optimal manoeuvring.
- **Cut and coagulation in one simple step**  
In one simple move the retraction of the loop ensures both cut and coagulation leaving a nice clean surface. This technique minimizes the need for post-coagulation of the cervix or peduncle.
- **Ergonomic surgical position**  
By eliminating traditional coagulation and cutting devices the surgical time is reduced with several minutes and in addition the loop induces a more ergonomic working environment due to the shortened procedural time.

## versatile

### Applicable for various sizes of uteri and myomas

The versatility of the LiNA Bipolar Loop emphasizes the adaptation to the various sizes of uteri or myomas.

- 3 loop sizes: standard (160mm x 80mm), large (200mm x 100mm) and x-large (240mm x 120mm)
- It is supplied with a fixed 2-pin 4mm male bipolar plug (with 29mm distance) or EURO connector

