



Innovation in Gynecology

LiNA Gold Loop HC™

Hand controlled device
No need for foot pedal
Amputation in a few seconds



The LiNA Gold Loop HC is a hand controlled version of the original LiNA loop. The LiNA Gold Loop HC is a safe and effective single-use monopolar loop for amputation of the uterus during Laparoscopic Supracervical Hysterectomy (LSH) and for myomectomy.

LiNA Gold Loop HC™

Precision

Amputation in just a few seconds

- Designed to perform quick and easy amputation of the uterus in a few seconds
- Utilizing monopolar energy, the LiNA Gold Loop HC ensures both cut and coagulation in one movement leaving a clean and well-coagulated surface.
- New hand controlled design gives the flexibility to operate without a foot switch



Safety

Full control and visualization

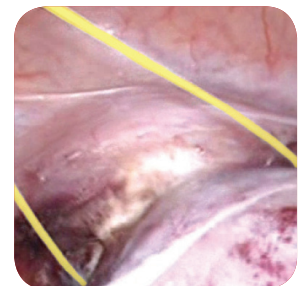
- Hand control allows the surgeon to have full attention to the procedure
- The colored insulation together with the gold loop wire provides a comprehensive view for positioning and improves the visualization on the monitor.



Versatility

Compatibility with most ESUs

- The LiNA Gold Loop HC is supplied with a standard 3-pin monopolar plug compatible with most monopolar ESU's.
- The LiNA Gold Loop HC is available in 3 loop sizes:
Standard: 160mm x 80mm, Large: 200mm x 100mm and X-large: 240mm x 120 mm



Ordering information:

REF.	Product	LiNA Gold Loop HC™
REF.	Product	Packing
EI-160-H	LiNA Gold Loop HC™ – 5mm endoscopic hand controlled monopolar Loop for Laparoscopic Supracervical Hysterectomy and Myomectomy. Dimensions of loop: 160mm x 80mm. with 3 meter cable and 3-pin ESU connector.	Box of 6, sterile, single use
EI-200-H	LiNA Gold Loop HC™ – 5mm endoscopic hand controlled monopolar Loop for Laparoscopic Supracervical Hysterectomy and Myomectomy. Dimensions of loop: 200mm x 100mm. with 3 meter cable and 3-pin ESU connector.	Box of 6, sterile, single use
EI-240-H	LiNA Gold Loop HC™ – 5mm endoscopic hand controlled monopolar Loop for Laparoscopic Supracervical Hysterectomy and Myomectomy. Dimensions of loop: 240mm x 120mm. with 3 meter cable and 3-pin ESU connector.	Box of 6, sterile, single use