

become
more visible



System blue

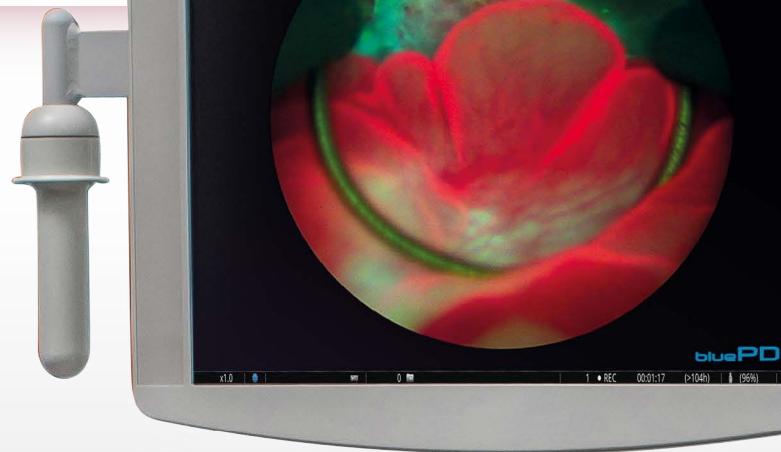
The New "blue" Standard
for Photodynamic Diagnostics (PDD)

System blue

The new "blue" Standard for Photodynamic Diagnostics (PDD)

Early identification is the top priority for treatment of bladder tumors. This is why our systems for Photodynamic Diagnostics (PDD) have been contributing to make this as simple and safe as possible for more than 20 years.

System blue means that the development of PDD has now attained a new level of quality – allow yourself to be impressed by the "blue" Standard and become more visible.



Innovative and unique

System blue from Richard Wolf combines unique innovative components on an excellent system for early identification and treatment of tumors.

- **ENDOLIGHT LED blue:** The first LED-based PDD light source offers maximum color contrast for clear tumor differentiation
- **Autoclavable Special Fiber Light Cable:** Unique for fluorescence applications
- **ENDOCAM Logic HD:** High-resolution camera controller with two different PDD modes – **bluePDD** and **bluePDD Color Contrast**
- **PENDUAL blue HD:** Articulated full HD camera head for application in cystoscopy and in resection
- **PANOVIEW Telescopes blue:** Improved light transmission and longer life time thanks to new fiber design

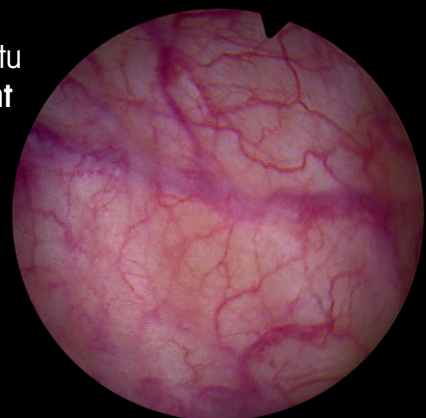


become

more visible

Bladder carcinomas can be easily overlooked using conventional cystoscopy on account of their superficial growth or their minimal expansion.

Carcinoma in situ
under white light



ENDOLIGHT LED_{blue}

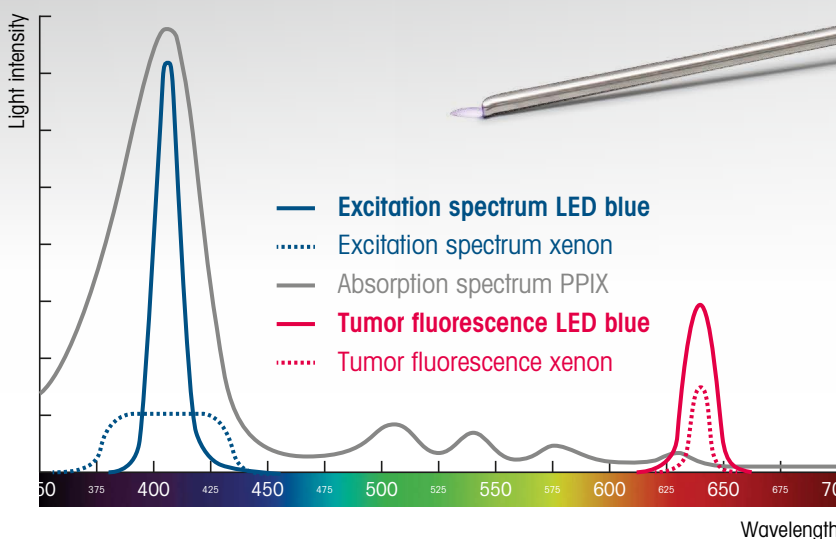
Maximum light for maximum results

ENDOLIGHT LED blue is the world's first PDD light source with innovative LED technology.

The emission spectrum is tuned optimally to the absorption band of the photosensitizer used for PDD. This generally results in a much stronger tumor fluorescence than that obtained with xenon light sources.

This permits a much more contrast-rich visualization and a resulting much better differentiation between malignant and healthy tissue. It also permits a much brighter, more natural envisionment of the site.

- Worldwide first PDD light source based on LED
- Performance output comparable with 300 watt PDD xenon light source
- Virtually no aging of the illuminant
- Maximum color contrast for best possible differentiation of the tumorous tissue
- Can also be used for white light endoscopy without restrictions



The comparison with xenon technology demonstrates that the emission band of **LED blue** is optimally correlated with the main absorption band of the photosensitizer based on PPIX (protoporphyrin IX). This leads to much stronger tumor fluorescence.





You will find user opinions and other information on our website:

systemblue.richard-wolf.com



„The HD image enables tumors to be easily differentiated even in white-light mode – the different blue PDD modes also allow outstanding distinction and contrast differentiation. In summary, I can say that this represents a substantial improvement over anything we have experienced up to now.“

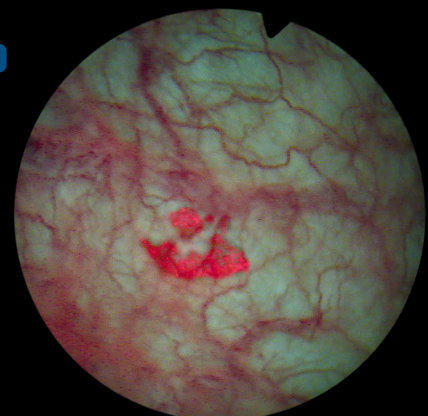
Dr. med. Michael Straub // Managing Senior Physician, Director of Endourology and Urinary Stone Therapy, Rechts der Isar Hospital, Munich

become

more visible

In blue PDD mode, the color of tumorous tissue becomes significantly more differentiated than the healthy surrounding tissue. The healthy section of the bladder wall is shown as light and contrast-rich and this permits an outstanding overview.

bluePDD



System blue

Unique components for an innovative system



„The great aspect of System blue is the strong image illumination: This allows me to operate continuously in PDD mode and achieve complete resection of all tumors with a high level of clinical certainty.“

Dr. med. Gerson Lüdecke // Managing Senior Physician, Director of the Urooncology / Medical Tumor Therapy Section, Hospital and Clinic for Urology, Pediatric Urology and Andrology, Giessen

ENDOCAM Logic HD

The latest software update makes our high-resolution camera controller the first of its kind with two different PDD modes.

- **Two Special Imaging Modes:** "bluePDD" and "bluePDD Color Contrast"
- **High-resolution, brighter full HD endoscopic image**
- **PDD by software update:** Easily upgradeable portfolio devices



Pendul blue HD camera head

- **Intuitive articulation** between 0° and 90° for use as pendulum head for the resection
- **1080 P full HD sensor resolution**
- **Bladder tumor resection can be carried out entirely under blue light**
- **Can also be used for white-light endoscopy without restrictions**

PANOVIEW Telescopes blue

The new fiber design and a special extremely bright lens system provide brilliant images and a longer service life.

- **HD telescope** for a brilliant, bright image
- **Improved light transmission**
- **Longer service life**
- **Can also be used for white-light endoscopy without restrictions**



„From my own experience, I am able to report that treatment successes can be increased with every improvement in image quality and the resulting enhanced identifiability of tumorous tissue. This ultimately provides a considerable advantage for the patient.“

Shabrokh F. Shariat, M.D. // Department of Urology and Comprehensive Cancer Center, Medical University of Vienna, Vienna General Hospital

Special Fiber Light Cable blue

Another innovation from Richard Wolf:

Our highly flexible PDD light cable can be autoclaved without any restrictions.

- **Autoclavable!** An innovation for fluorescence applications
- **Better transmission** through innovative fiber design
- **Highly flexible light cable**
- **Can also be used for white-light endoscopy without restrictions**



become

more visible

The blue PDD color contrast mode offers an even stronger differentiation which visualizes the fluorescence in vibrant magenta.

bluePDD
Color Contrast



System blue

System overview

Light source

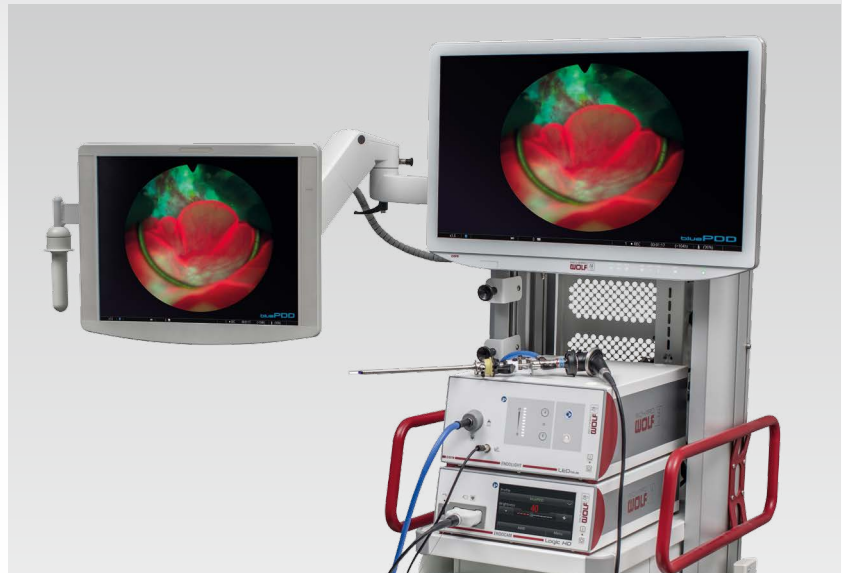
ENDOLIGHT LED blue, complete

comprising:

ENDOLIGHT LED blue Light Source (5165001), power cable (244003), patch cable, RJ45 (72325378), rocker switch (2030105) **51650011**

Special Fiber Light Cable blue, Set

Fiber bundle Ø 3.5 mm, length 2.3 m (80673523), adapter endoscope-side (809509) **806735231**



Camera

ENDOCAM LOGIC HD Controller Set

comprising:

ENDOCAM LOGIC HD Controller (5525108*), hand-held remote control (5525401), USB flash memory stick 8 GB (56540028), CAN BUS terminator (5590989), HDMI / DVI-D cable interlock 3.0 m (103843), power cable (244003) **55251081***

*Other model versions in the product range.



Pendul blue HD camera head

for

ENDOCAM Logic HD **5525833**

Monitor

LCD Monitor 27"

1920 x 1080 pixels (full HD),

WxHxD: 650 x 419 x 58 mm,

Weight: 8.5 kg **LMD 2765NB**

also:

Monitor stand **5370.0190**

Telescopes*

PANOVIEW Telescope blue

Ø 4.0 mm

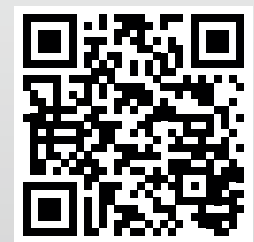
0° 8650.514

12° 8654.531

30° 8654.522

70° 8650.515

*Ask about our "SHARK" resectoscopes. We will be delighted to make you an offer for an individual resection system.



Scan the code and find out about **System blue** on the Internet.