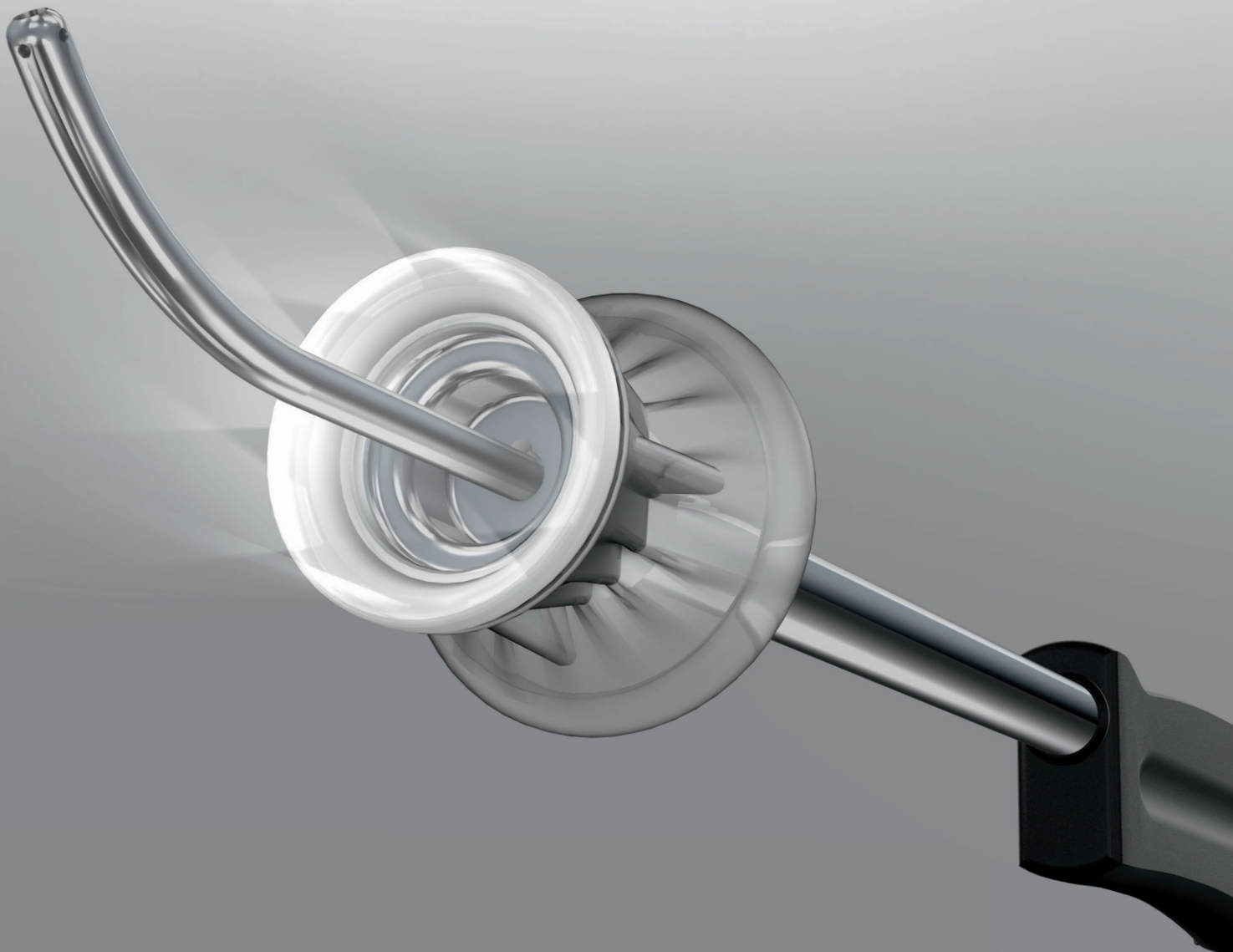


Safety in a new light



SecuFix Uterus Manipulator

Pioneering System with
Colpotransillumination and Vacuum Fixation



Safety in a new light

The development of patient-friendly, minimally invasive hysterectomy techniques and the associated good results, now mean that hysterectomy can today be carried out laparoscopically in many cases.

The new SecuFix Uterus Manipulator defines new benchmarks for safety. The atraumatic fixation of the uterus using vacuum aspiration and "Colpotransillumination", i.e. the option of visualizing tissue using distal, annular illumination for the cervical cap are the significant new product features. They are important factors for an optimum surgical result and permit compliance with oncological criteria, e.g. the avoidance of intra-peritoneal tumor cell dislocation.

All good things come in threes

SecuFix has a modular structure made of just three parts – a positive feature for handling and cost-effectiveness.

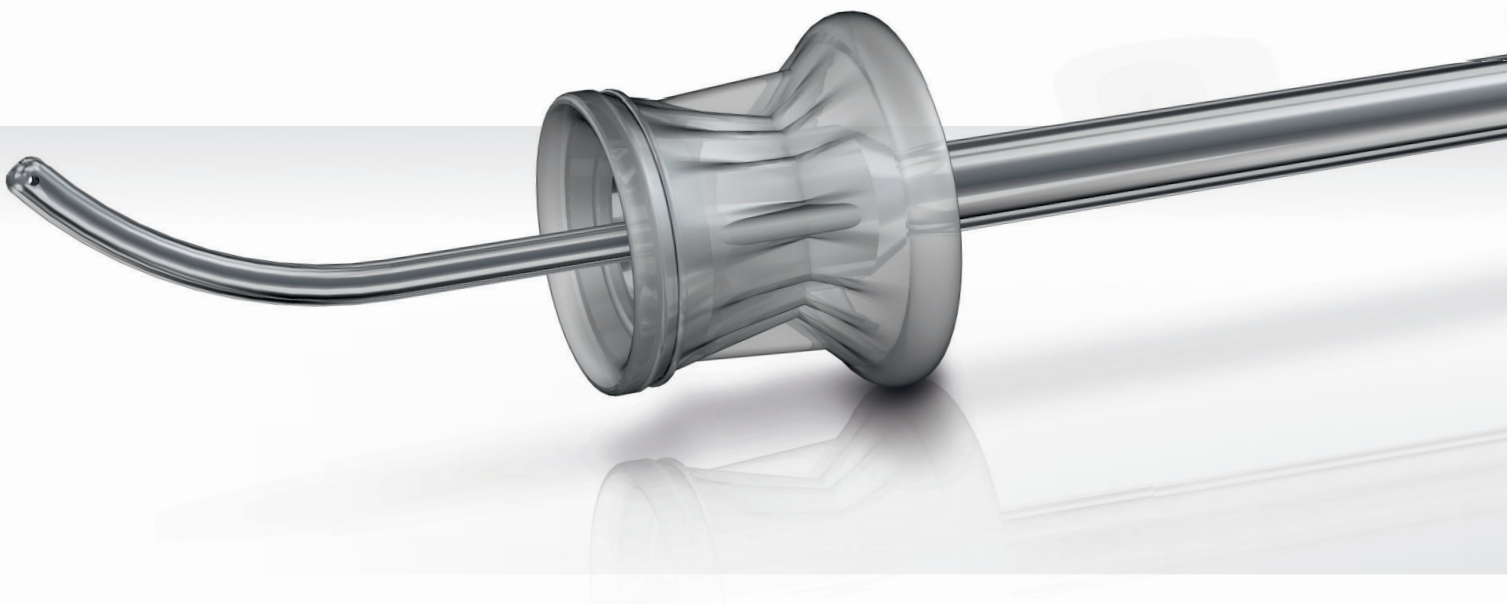
- Uterus Manipulator
- Uterus probe with longitudinal scale
- Colpotransilluminator

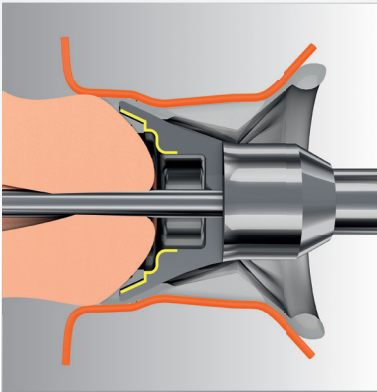
The Colpotransilluminator is the ideal operating platform

- Optimum delimitation between cervix and vagina
- Good visualization of the fornix

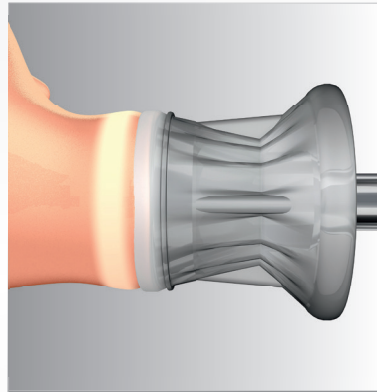
Stability means control

The stable design makes the SecuFix Uterus Manipulator a robust instrument which allows the surgeon to move the uterus in any direction required.





ONE SIZE
FITS ALL



COLPO
TRANSILLUMINATOR



VACUUM
FIXATION

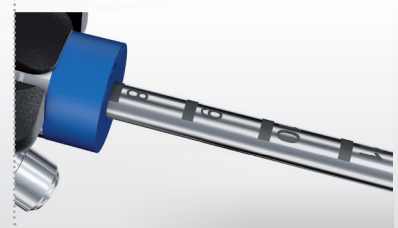
The conical shape of the manipulator dome and the gradations in the cap itself means that portios of all sizes can be accommodated. The elastic vaginal cuff guarantees an optimum seal for the vagina and hence a stable pneumoperitoneum through all phases of the intervention.

The annular illumination provides optimum visualization of the cutting edge and at the same time serves as supporting illumination while the manipulator is positioned in the vagina.

The aspiration in the uterus and in the cervix permits atraumatic and secure fixation. This avoids intraperitoneal cell dislocation.

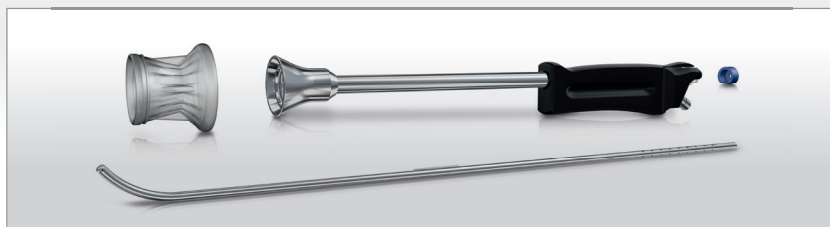


The longitudinal scale of the uterus probe means that the probe can be adapted to different cervix lengths with minimum cervical dilatation.



SecuFix Uterus Manipulator

Ordering data



SecuFix Uterus Manipulator Set

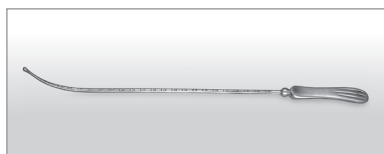
Comprising: **SecuFix Uterus Manipulator** (8370701), **SecuFix Uterus Probe with longitudinal scale** (8370702), **SecuFix Colpotransilluminator, sterile** (pack of 10 sets, packed singly, sterile, 41708370), **cleaning brush** (6.05), **cleaning brush** (6.09), **seal cap** (pack of 10, 89.02) 83707011



SecuFix Colpotransilluminator, sterile

(pack of 10 sets, packed singly, sterile). Set includes: Colpotransilluminator and vacuum tube (with nonreturn valve, suction connector, Y-shaped adapter for use with a suction instrument on the same suction unit, suction clamp), single-use product 41708370

Accessories



Uterus probe after Sims ... 8365.00



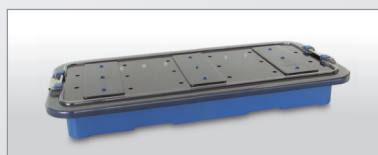
Fiber light cable

Fiber bundle Ø 3.5 mm
(color marking orange),
length 2.3 m 806635231



Rinsing tube

for machine cleaning,
length 600 mm 163915



RIWO System Tray

Instrument container, inside
dimensions (L x W x H):
500 x 200 x 60 mm,
steam sterilizable 38201.586